



SCILIO PHIALE

Etna Rosso 2009

80% Nerello Mascalese
20% Nerello Cappuccio

Grown on the north face of Mount Etna and aged for one year in 100% French oak.

The result: a complex nose of fruit and perfume, with a taste that is unctuously delicious, suggestive of black cherries, chocolate leather and cedar.



SCILIO PHIALE

Etna Rosso 2009

80% Nerello Mascalese
20% Nerello Cappuccio

Grown on the north face of Mount Etna and aged for one year in 100% French oak.

The result: a complex nose of fruit and perfume, with a taste that is unctuously delicious, suggestive of black cherries, chocolate leather and cedar.



SCILIO PHIALE

Etna Rosso 2009

80% Nerello Mascalese
20% Nerello Cappuccio

Grown on the north face of Mount Etna and aged for one year in 100% French oak.

The result: a complex nose of fruit and perfume, with a taste that is unctuously delicious, suggestive of black cherries, chocolate leather and cedar.



SCILIO PHIALE

Etna Rosso 2009

80% Nerello Mascalese
20% Nerello Cappuccio

Grown on the north face of Mount Etna and aged for one year in 100% French oak.

The result: a complex nose of fruit and perfume, with a taste that is unctuously delicious, suggestive of black cherries, chocolate leather and cedar.



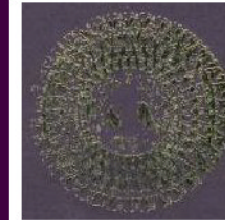
SCILIO PHIALE

Etna Rosso 2009

80% Nerello Mascalese
20% Nerello Cappuccio

Grown on the north face of Mount Etna and aged for one year in 100% French oak.

The result: a complex nose of fruit and perfume, with a taste that is unctuously delicious, suggestive of black cherries, chocolate leather and cedar.



SCILIO PHIALE

Etna Rosso 2009

80% Nerello Mascalese
20% Nerello Cappuccio

Grown on the north face of Mount Etna and aged for one year in 100% French oak.

The result: a complex nose of fruit and perfume, with a taste that is unctuously delicious, suggestive of black cherries, chocolate leather and cedar.

